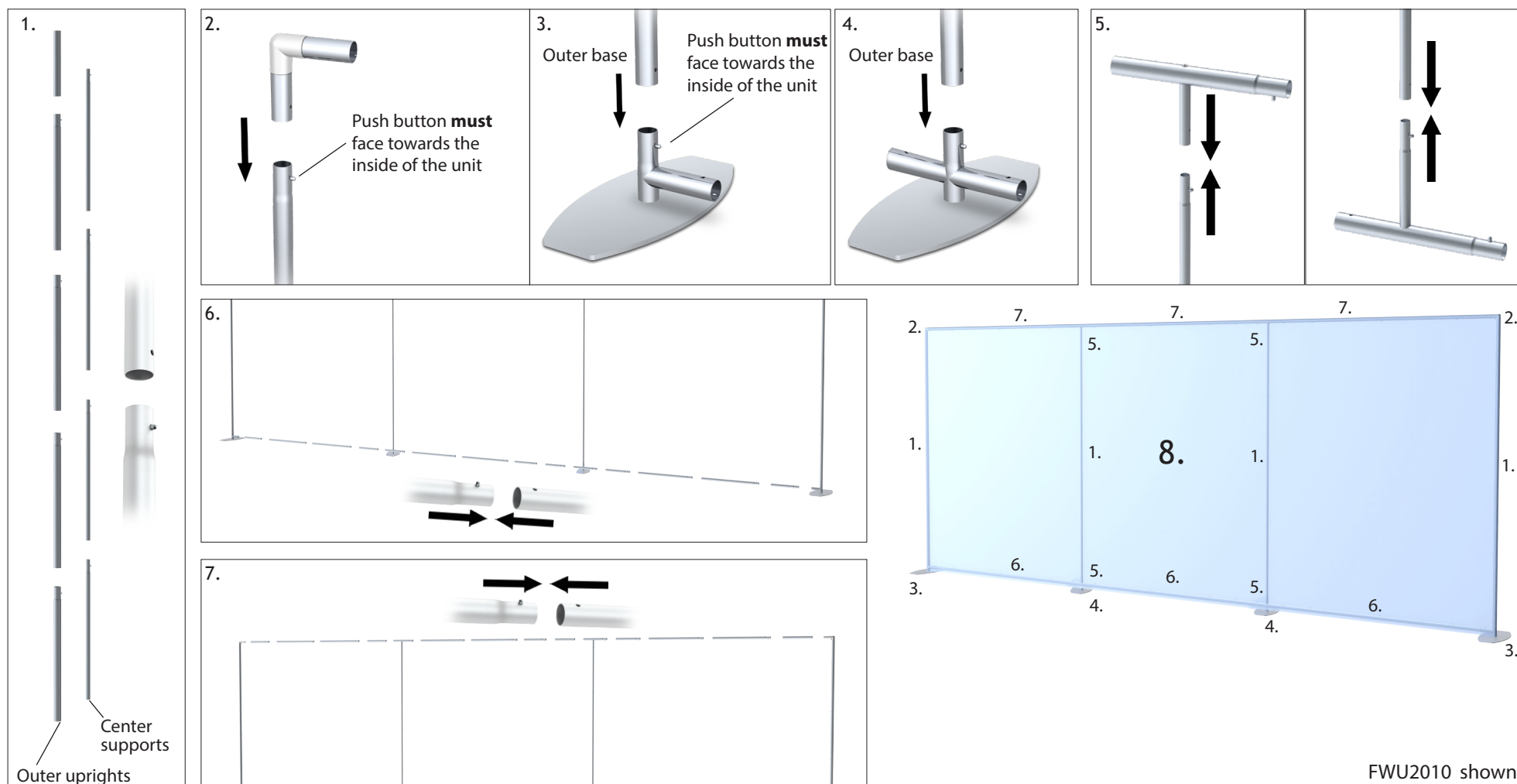


Straight Flat Wall™ - FWU Series

All tube-ends are labeled with a number sticker. Tube-ends should be connected 1 to 1, 2 to 2, 3 to 3, etc.

1. Connect upright sections together.
2. Slide corner bracket over upright until push button clicks into place.
3. Slide upright over outer base upright until push button clicks into place.
4. Slide upright over inner base upright until push button clicks into place.
5. Slide upper T-section over center upright until push button clicks into place. Repeat for lower T-section.
6. Press bottom crossbar sections in between uprights until push buttons click into place.
7. Press top crossbar sections in between uprights until push buttons click into place.
8. Slide pillowcase graphic over frame and zipper at bottom to complete unit assembly (not shown).

NOTE: Model shown below may differ from your model. Although the number of upright sections may change, assembly instructions remain the same.



FWU2010 shown